



Alaska Department of Transportation & Public Facilities

DEPARTMENT FAST FACTS

Prepared for Legislative Session 2023

TABLE OF CONTENTS

| | |
|--|----|
| OVERVIEW | 1 |
| STATUTES..... | 2 |
| FAST FACTS | 2 |
| DIVISIONS & REGIONS | 3 |
| FUNDING..... | 4 |
| HIGHWAYS & ROADS..... | 5 |
| HIGHWAY SAFETY | 6 |
| BRIDGES & TUNNELS..... | 6 |
| ALASKA MARINE HIGHWAY SAFETY | 7 |
| AIRPORTS | 8 |
| DIVISION OF FACILITIES SERVICES | 9 |
| STATEWIDE PLANNING & PROGRAM DEVELOPMENT..... | 10 |
| STATEWIDE DESIGN & ENGINEERING SERVICES..... | 11 |
| STATE EQUIPMENT FLEET..... | 12 |
| TRANSIT | 13 |
| MEASUREMENT STANDARDS & COMMERCIAL VEHICLE COMPLIANCE..... | 14 |
| CONTACT | 15 |

DEPARTMENT OF TRANSPORTATION & PUBLIC FACILITIES (DOT&PF)

PURPOSE

Keep Alaska Moving through service and infrastructure.

IMPACT

- DOT&PF serves every Alaskan, every day
- DOT&PF provides a safe and efficient transportation system for Alaska to thrive
- DOT&PF provides Alaskans with access to goods, services, economic opportunities, each other and the world

CORE VALUES

- **Integrity:** Doing the right thing even when no one is watching. Doing what you say you are going to do
- **Excellence:** Commitment to continually improve
- **Respect:** Positive regard for customers, stakeholders, investors and colleagues
- **Safety:** Commitment to safeguarding transportation systems and users while promoting a safety culture in the workplace.

CORE SERVICES

- Operate Alaska's Transportation Infrastructure
- Modernize Alaska's Transportation Infrastructure
- Preserve Alaska's Transportation Infrastructure
- Provide Transportation Services
- Provide Public Facilities Services

VISION STATEMENT

Moving beyond Alaska's challenges while meeting Alaskans' distinct transportation needs through trust, teamwork, and results.

STRENGTHS

- Strong work ethic
- Experience, knowledge, expertise
- Quantity and quality of assets
- Reasonable, responsible problem-solvers
- Interesting challenges
- Dedicated workforce
- Willing to lead
- Opportunity for growth
- Pride in accomplishment
- Good People



DOT&PF-RELATED ALASKA STATE STATUTES

- AS 2 Aeronautics
- AS 19 Highways and Ferries
- AS 19.10 State Highway System
- AS 19.10.300 Commercial Motor Vehicle Requirements
- AS 19.25 Utilities, Advertising, Encroachment and Memorials
- AS 19.65 Alaska Marine Highway System
- AS 19.65.050 Alaska Marine Highway System Fund and Budget
- AS 44.42 Department of Transportation & Public Facilities
- AS 44.42.067 Sustainable Energy Act
- AS 44.68.010 Use of State-Owned Vehicles
- AS 44.68.210 Highway Equipment Working Capital Fund
- AS 37.15 Alaska International Airport Funds
- AS 35 Public Buildings, Works, and Improvements

FAST FACTS

The Alaska Department of Transportation and Public Facilities has jurisdiction over:

- 5,682 center line miles / 11,843 lane miles of roads / highways
- 80 DOT&PF staffed Maintenance Stations: 20 Southcoast Region, 22 Central Region, 38 Northern Region (includes seasonal stations)
- 235 State Airports
- 2 International Airports
- 9 Active Ferries
- 35 Ports of Call
- 16 Harbors
- 851 DOT&PF owned bridges
- 7,366 pieces of state equipment & vehicles distributed throughout all executive branch departments, Legislative Affairs, and the Court System
- 827 Public Facilities maintained, inclusive of 731 DOT&PF Owned Facilities
- 9 Weigh Stations
- 3 DOT&PF-owned tunnels and maintenance of the 2.5 mile Anton Anderson Memorial Tunnel – the longest highway tunnel in North America
- Approximately \$12.6B in transportation asset infrastructure



*An eagle lands on the M/V Columbia. August 2022.
By Lonnie Walters, Alaska DOT&PF*

DOT&PF is one of the largest departments, consisting of approximately 3,393 permanent full-time, part-time and non-permanent employees in 8 labor unions in 83 locations throughout the state.

DIVISIONS AND REGIONS

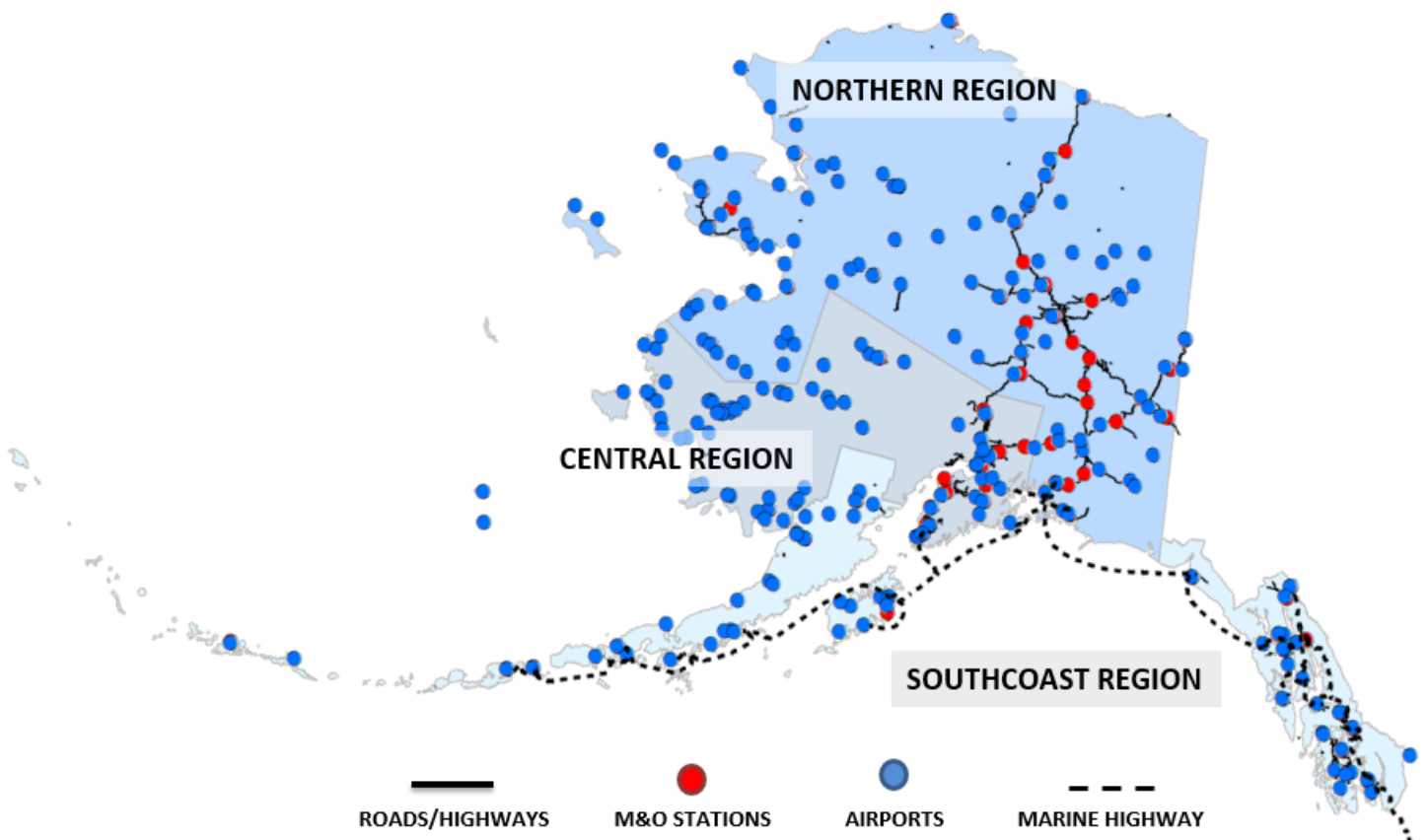
- Administrative Services
- Alaska International Airport System / Statewide Aviation
- Alaska Marine Highway System
- Office of the Commissioner
- Design and Engineering Services
- Facilities Services
- Information Systems and Services
- Measurement Standards & Commercial Vehicle Compliance
- Program Development
- State Equipment Fleet

The department is administratively divided into three regions:

Northern Region headquarters
2301 Peger Road
Fairbanks, AK 99709

Central Region headquarters
4111 Aviation Avenue
Anchorage, AK 99519

Southcoast Region headquarters
6860 Glacier Highway
Juneau, AK 99811



Rainbow over Gunny Sack Creek on the Richardson Highway Emergency Bridge Repair Project. July 2022. By Samantha Haller, Alaska DOT&PF

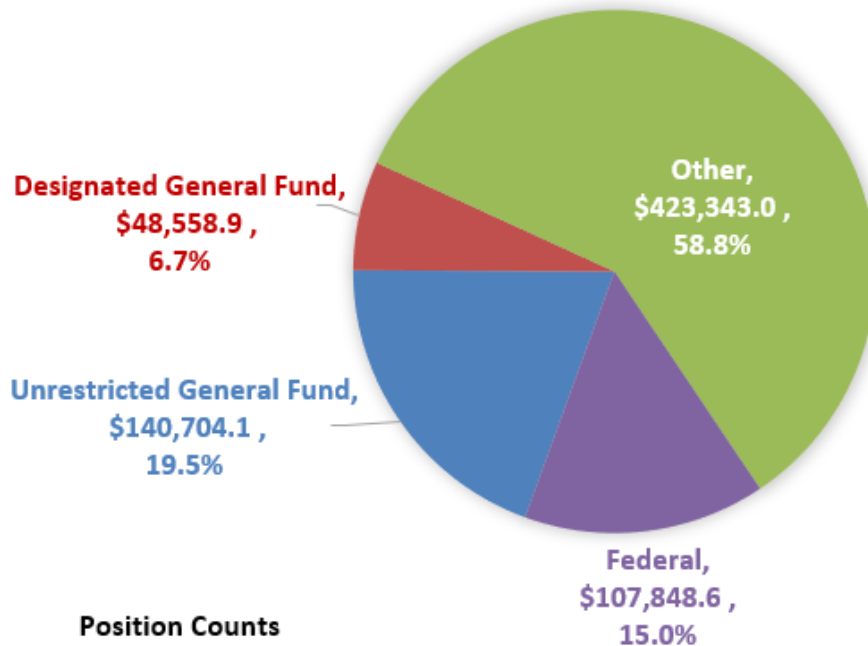
FUNDING

FY2023 OPERATING BUDGET

BY FUND SOURCE

\$720,454.6

Numbers displayed in thousands



Position Counts

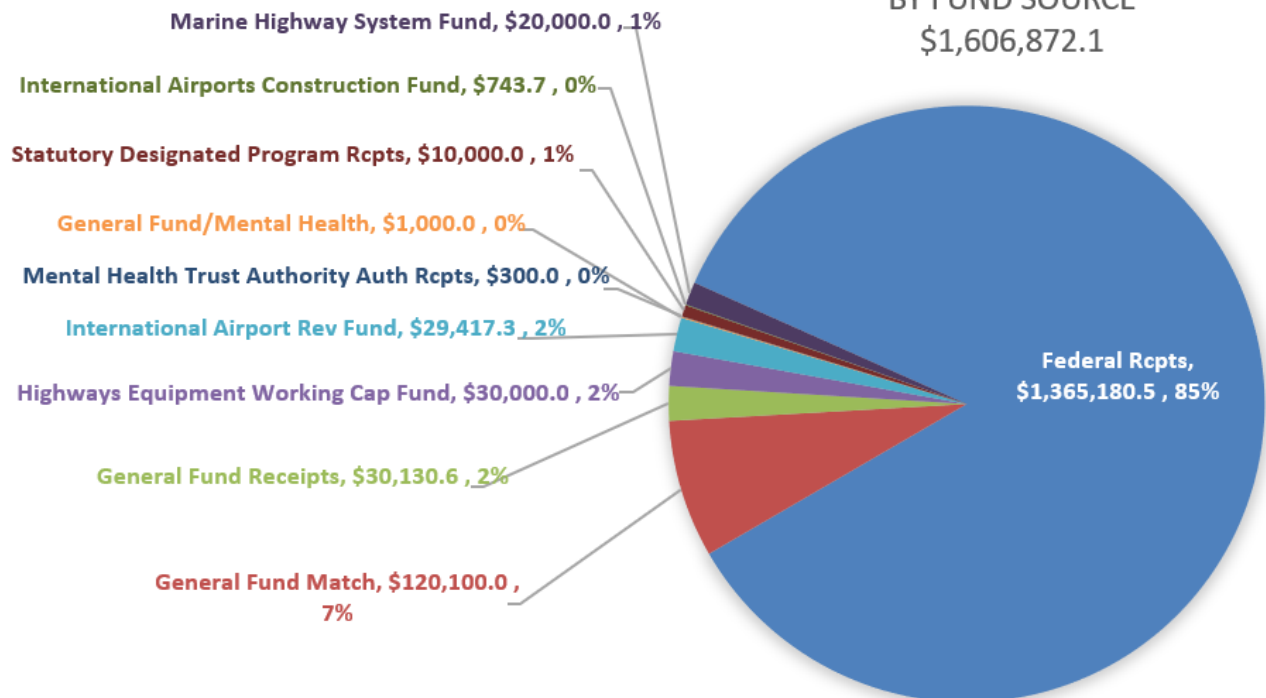
Full-time: 2,964 / Part-time: 283 / Non-perm: 146

Numbers displayed in thousands

FY2023 CAPITAL BUDGET

BY FUND SOURCE

\$1,606,872.1



HIGHWAYS AND ROADS

The state maintains roads that are part of the National Highway System (NHS) and other arterials, collectors and local roads.

- 5,682 center line miles of roads/highways
 - 3,784 paved
 - 1,897 unpaved
 - 2,207 center line miles of DOT&PF NHS roads
- 851 DOT&PF owned bridges
- 3 DOT&PF-owned tunnels and maintenance of the 2.5 mile Anton Anderson Memorial Tunnel – the longest highway tunnel in North America
- 1,055 total bridges and 4 tunnels inspected by DOT&PF including state, municipal and borough owned
- 9 Weigh Stations
- 4 Safety Corridors
 - Seward Highway, Potter Marsh to Girdwood (MP117 to MP87)
 - Parks Highway, Wasilla to Houston (MP44.5 to MP53)
 - Sterling Highway, Sterling to Soldotna (MP83 to MP93)
 - Knik-Goose Bay Road, Palmer-Wasilla Highway to Point MacKenzie Road (MP.75 to MP17)



Knik personnel in rock truck transporting across the Breach after Typhoon Merobk. By Shea Oliver, Alaska DOT&PF



Snowdrift on American Summit on Taylor Highway, March 2022. By Sam Jennings, Alaska DOT&PF



Saw cutting, Richardson Highway project. By Benoit Pignon, Alaska DOT&PF

HIGHWAY SAFETY

DOT&PF produces annual traffic crash reports. The latest data are from 2021:

- Fatalities – 68 (an increase of 6.25% from 2020)
- Alcohol impaired driving fatalities – 15 or 22.05% of all fatalities
- Unbelted fatalities (out of fatalities in seatbelt equipped vehicles only) – 10 or 14.71% of all fatalities
- Speeding related fatalities – 19 or 27.94% of all fatalities
- Non-motorist fatalities – 19 (16 pedestrians, 3 bicyclists) or 32.35% of all fatalities
- Since 2015, motor vehicle fatalities have trended down an average of 3.4% per year. In the five years prior to 2015 (2010 – 2014), motor vehicle fatalities trended down an average of 1.9% per year.

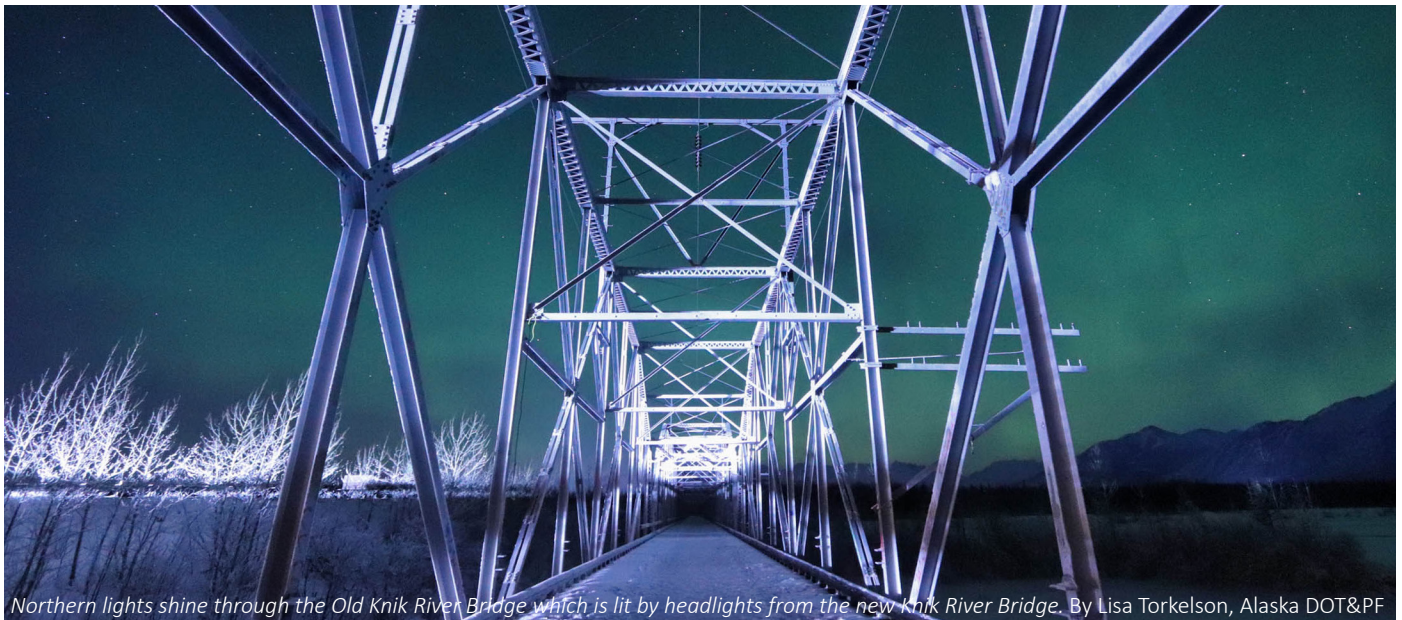


*One of 47 signs installed in 2011 within four Safety Corridors.
By Brendan Dougherty, Alaska DOT&PF*

BRIDGES AND TUNNELS

1,055 bridges and 4 tunnels on publicly-owned roads inspected by DOT&PF including, state, municipal and borough owned:

- 851 bridges owned by the department
 - 87 culverts 20' or greater in diameter
 - 24 transfer bridges at AMHS terminals
- 33 bridges owned by other state agencies
- 171 bridges owned by cities and boroughs
- 3 tunnels owned by the department
- 1 tunnel owned by other state agency



Northern lights shine through the Old Knik River Bridge which is lit by headlights from the new Knik River Bridge. By Lisa Torkelson, Alaska DOT&PF

ALASKA MARINE HIGHWAY SYSTEM

- 9 Active Ferries serving 33 ports in Alaska, Prince Rupert, B.C., and Bellingham, WA
- 3,500 route miles
- 118,212 total passengers in CY2021
- 53,111 total vehicles in CY2021

The Alaska Marine Highway System (AMHS) service is divided into two major systems:

SOUTHEAST SYSTEM – Bellingham north to Yakutat

Vessels:

- M/V Columbia
- M/V LeConte
- M/V Lituya
- M/V Hubbard
- M/V Matanuska
- M/V Tazlina

Southeast Communities:

- Angoon
- Bellingham, WA
- Gustavus
- Haines
- Hoonah
- Juneau
- Kake
- Ketchikan
- Metlakatla
- Pelican
- Petersburg
- Prince Rupert, B.C.
- Sitka
- Skagway
- Tenakee Springs
- Wrangell
- Yakutat

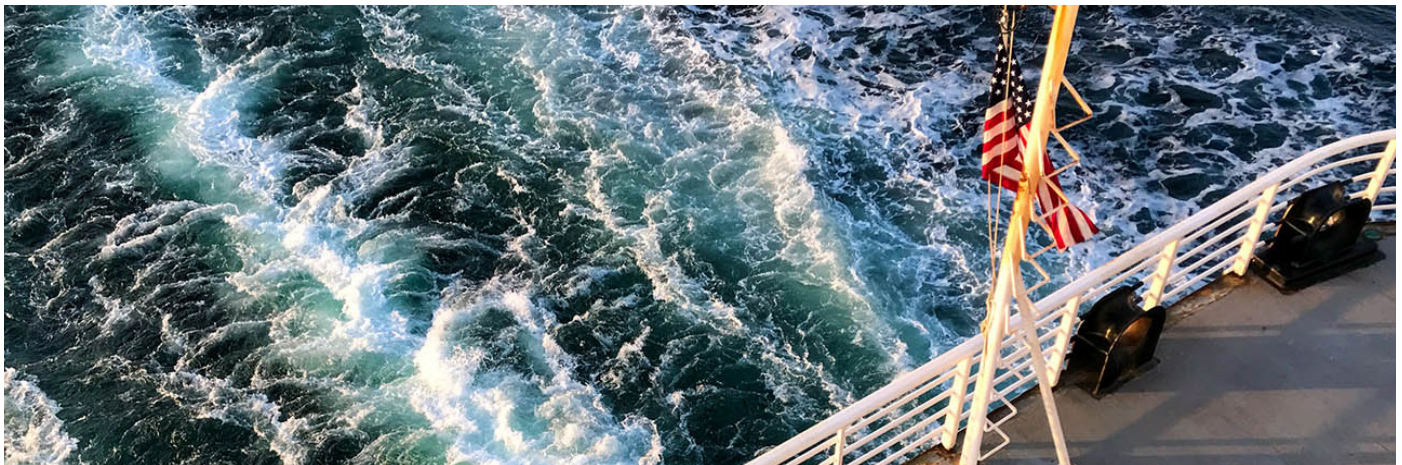
SOUTHWEST SYSTEM – Cordova west to Unalaska/Dutch Harbor

Vessels:

- M/V Aurora
- M/V Tustumena
- M/V Kennicott (serves both Southeast and Southwest with cross-gulf service)

Southwest Communities:

- Akutan
- Chenega Bay
- Chignik
- Cold Bay
- Cordova
- False Pass
- Homer
- King Cove
- Kodiak
- Old Harbor
- Ouzinkie
- Port Lions
- Sand Point
- Seldovia
- Tatitlek
- Unalaska/Dutch Harbor
- Valdez
- Whittier



Aboard the M/V Kennicott as it motors between Juneau and Ketchikan, June 2022. By Lisa Torkelson, Alaska DOT&PF

AIRPORTS

The Alaska Aviation System is the largest aviation system in North America. Alaska's 663,300 square miles of land and water and 2,427,971 square miles of airspace is served by:

- 309 certified air carriers providing commercial and on-demand services
- 9,127 active pilots
- 8,713 registered aircraft in Alaska
- 761 recorded landing areas (public, private, and military)
- 104 seaplane bases (most in the country)
- 232 aviation weather camera sites



Unloading essential cargo for the people of Kipnuk during the Kipnuk Airport Rehabilitation Project. By Ryan Bailey, Alaska DOT&PF

Tourism relies heavily on aviation. In 2019, an estimated 2.26 million people visited Alaska-- more than three times the population of the entire state. 176 public use airports and many more unrecorded strips provide access to the 97 state and 24 national parks.

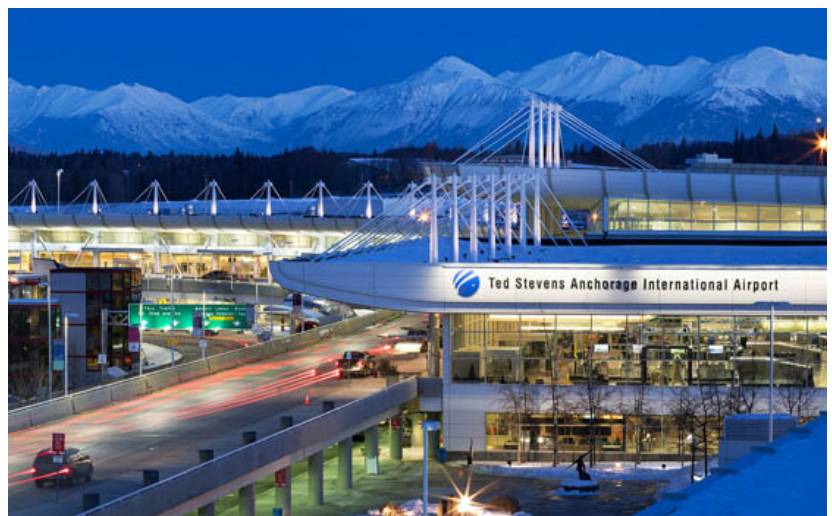
The State of Alaska owns and operates 237 airports, including 235 rural airports and the Fairbanks (FAI) and Ted Stevens Anchorage (ANC) International Airports. Rural airports are vital to Alaskan communities providing access to essential supplies, mail, schools, medical/dental services, and travel. The mission of the state-owned rural airports is "to sustain and improve the quality of life throughout Alaska."

- 82% of the communities and FAA-recognized locations in Alaska are not accessible by road
- 251 communities are exclusively accessed by air
- 142 communities receive state-provided air transportation infrastructure as air travel is their only transportation access

The Alaska International Airport System (AIAS) is comprised of ANC and FAI. These airports, operating as a system, are the primary transportation corridors for intra- and out-of-state travelers and freight. The world's largest aircraft can land at both airports. The mission of the AIAS is "to keep Alaska flying and thriving."

ANC is the largest airport in Alaska. It is a vital gateway for trade and commerce between North America and Asia.

- #2 airport in North America for landed cargo weight
- #4 airport in the world for cargo throughput



Ted Stevens Anchorage International Airport. By Dave Krause Alaska DOT&PF

- 3.6 million tons of cargo flow through the airport annually
- 5.7 million passengers transit the airport annually
- Over 180,000 passenger and air cargo operations annually
- Over 75,000 Lake Hood Seaplane Base operations annually
- In Anchorage, 1 in 10 jobs is tied to ANC for a total of 26,000 jobs.
- Generates \$1.8B in economic benefit to the community, including \$1B in direct spending and \$840M from multiplier effects*.

FAI is the second largest airport in Alaska. It serves as the regional passenger and cargo hub for interior Alaska and is a vital gateway to northern Alaska’s communities and conservation lands, including Gates of the Arctic National Park and Preserve and Arctic National Wildlife Refuge.

- Alternate airport for ANC with abundant ramp space for all size/types of aircraft
- 11,800 feet of runway and a heavy cargo apron with 6 aircraft parking spots
- Float pond with 322 tie downs and 176 float pond spaces
- Over 1.1 million passengers transit the airport annually
- More than 107,000 operations (takeoffs and landings) in 2022



FAI Float Pond. By Angela Spear, Alaska DOT&PF

*The Multiplier Effect is an estimate of how many times a dollar is re-spent in, or “ripples through,” a community (or larger economic region).

DIVISION OF FACILITIES SERVICES

Facilities Services Initiative: 2015 – Present

- Project goals are to improve both the efficiency and effectiveness of facilities maintenance across all State of Alaska Departments.
- The Executive Facilities Management Advisory Committee (EFMAC) recommended and OMB directed a new Division of Facilities Services be formed in February 2017. The Division of Facilities Services (DFS) became effective July 2018.
- To date 827 facilities are being served by DFS from DOT&PF, DEED, DOL&WD, DPS, and DNR
- Statewide Leasing program integrated into DFS in FY22

Statewide Public Facilities, as part of DFS, is responsible for managing the planning, design, and construction of new and renovation projects for most agencies within the State of Alaska.

- Currently managing over 150 projects for 10 different agencies
- Total value of over \$370M



New Barrow Combined Maintenance Facility and Fairbanks Statewide Public Facilities staff.

STATEWIDE PLANNING AND PROGRAM DEVELOPMENT

The Division of Planning & Program Development is responsible for allocating state and federal funding to transportation and facilities programs and projects across Alaska including:

- Statewide Transportation Improvement Program (STIP)
- Highway Safety Improvement Program (HSIP)
- Preventative Maintenance Program
- Community Transportation Program
- Transportation Alternatives Program
- Ice Roads & Seasonal Roads Program (new in 2022)
- Resiliency & Coastal Protection Program (new in 2022)
- Rural Ports, Docks, & Barge Landings Program (new in 2022)
- Community Bridge Investment Program (new in 2022)
- Sustainable Transportation Program (new in 2022)
- In 2022, the division successfully obligated:
 - \$812M of federal aid highway funds
 - \$63M of federal aid transit funds
 - \$8M of federal safety funds
- Over the past year, to ensure Alaska captures its fair share of Bipartisan Infrastructure Law funding, Planning and Program Development has:
 - Established the Strategic Investment Section to support data-driven performance-based investment decisions
 - Developed a new grants clearinghouse and funding opportunity hub for both state and federal programs
 - Established a new partnership with the Alaska Municipal League to assist communities in applying for federal discretionary grants
 - \$850M in grant applications have been submitted for community projects to date



The division initiated a pilot program in 2022 to establish **Rural Planning Organizations (RPOs)** across the state. Through pilot RPOs, rural communities will have a more formal stake in transportation planning while collaborating with DOT&PF to construct infrastructure improvements. Four areas of the state have expressed interest in forming a pilot RPO, with one formal agreement already signed with the Copper Valley Development Association. Outreach to rural communities across the state to gauge interest in this pilot program will continue in 2023.

Learn about the Statewide Transportation Improvement Program (STIP) here:

- [STIP website](#)
- [What is the STIP?](#)

WHAT'S NEW in Statewide Planning & Program Development?

- Developed a new grants clearinghouse and funding opportunity hub for both state and federal programs
- Established a new partnership with the Alaska Municipal League to assist communities and the State to apply for federal discretionary grant opportunities
- Developed a new competitive state program to support safe ice roads maintenance, and facilitated a call for projects for community highway and bridge improvements and transportation alternatives improvements

STATEWIDE DESIGN AND ENGINEERING SERVICES

With virtually all of the State's virtually all of the State's transportation program supported by federal dollars, the Division of Statewide Design and Engineering Services (DES) ensures that federal and state standards are used to deliver DOT&PF services, protecting the state from financial consequences of non-compliance. The Division provides leadership, technical services, engineering services and guidance to Department staff and monitors and adapts industry innovations to Alaska-specific applications. The Division provides compliance reviews to ensure federal and state laws, regulations and policies are followed on behalf of FHWA and the Federal Aviation Administration.



*Bridge #581, Miller Ck., Richardson Highway. Statewide DES Bridge Section inspector Elmer Marx "Chain Drags" the bridge deck to locate concrete delaminations.
By Hiram Henry, Alaska DOT&PF*

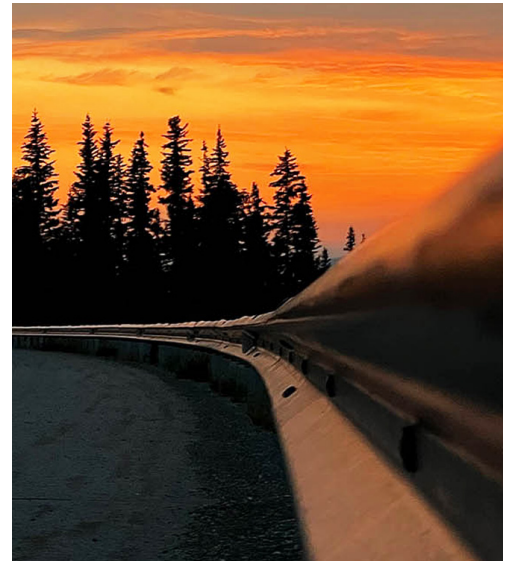
The Division oversees the federal Civil Rights, Highway Safety Improvement; Preservation; and Research and Technology Transfer programs and supports DOT&PF obligation of these program funds. Division staff have the authority to act on behalf of FHWA on all NEPA related decisions; inspects all bridges and both highway and airport pavements and provides design recommendations; statewide bridge design; construction material inspection and quality assurance; develops statewide standard specifications, plans and guidance for highways, airports, and facilities.

In 2022, the division:

- Completed approximately 595 routine, 112 minor structures, 34 fracture critical, 8 underwater, 60 low water, 70 hydraulic/scour, and 11 special bridge inspections in conformance with FHWA bridge/tunnel inspection requirements
- Completed a bridge deck testing project with 58 bridges
- Completed subsurface investigations for four bridges, reviewed drill plans for 13 projects and delivered construction assistance to pile driving operations for 17 bridges
- Delivered final, stamped plans and specifications for 90 structures (7 new bridges; 4 replacement bridges; 24 rehabilitations/preservation; 54 HSIP bridges; and 1 sign structure)
- Provided construction support to projects containing a total of approximately 39 bridges and structures
- Reestablished Seismic Retrofit Program to improve bridge performance during seismic events
- Updated 6 standard plans, added 3 new standard plans for efficiency and consistency across projects
- Established and chaired the Department's Diversity Equity and Inclusion Team
- Conducted research on Developing the Connected and Autonomous Vehicle Action Plan
- Developed and submitted federally required Asset Management Plan
- Organized a Department Team to develop the initial Resilience Improvement Plan
- Completed 69 FHWA-funded NEPA decisions (2 Environmental Impact Statement re-evaluations; 2 Environmental Assessment (EA)s re-evaluations; and 65 Categorical exclusions): Successfully completed the FHWA audit requirements of the NEPA 327 assignment program
- Managed Highway Safety Improvement Program that obligated over \$60 million
- Developed numerous new policy and/or specifications that include Buy America Specification and

Guidance; Airport survey specification; Revised Policy and Procedure on Work Zone Safety and Mobility; Issued Durable Markings policy and others

- Completed 12 airport pavement condition inspections per FAA requirements. Collected approximately 4,240 miles of pavement condition data on the road system to meet National Highway Performance Program requirement and to support Statewide Planning and Asset Management
- Developed 2022 Annual Pavement Preservation Plan and supported development of State of Good Repair project criteria
- Started six new research projects; published final reports for five research projects and awarded the State Transportation Innovation Council STIC Grant
- Provided instruction to 1,200 participants, including more than 100 local and tribal students through 84 transportation-related training events statewide
- Partnered with private sector providers to deliver specialty materials inspection and quality assurance testing on 90 construction projects
- Provided appraisal review services for 73 appraisal reports and 64 waiver valuations, which amounted to nearly \$6.1 million in acquisitions of approximately 375 parcels statewide (Since May 2022, these services have been fully contracted)
- Implemented a Pilot for online stormwater compliance tool called SWPPPTrack
- Continued Implementation of e-Construction through AASHTOWare Project Software Modules



Sunset over the Alaska Highway near Dot Lake, July 2022. By Chris Plutt, Alaska DOT&PF

Upcoming in FFY23

- Update the Alaska Highway Preconstruction Manual, Project Development Process
- Update sections of the Alaska Traffic Manual and Alaska Sign Design Specifications
- Deliver final stamped plans and specifications for 31 bridges and submit plans for 10 bridges in the 2023 Seismic Retrofit Program
- Complete the 2023 airport and highway pavement inspection and project recommendation program
- Complete 2023 bridge and culver inspection and project recommendation program
- Provide construction material testing support for 90 construction projects
- Complete major revision to sections of the Alaska Highway Drainage Manual
- Complete a Resiliency Improvement Plan for increased federal participation and reduced state match percentage
- Develop new policy to support the Department's Diversity, Equity and Inclusion team efforts
- Continue support and outreach to Tribes and local governments to provide workforce support through Local Technical Assistance Program

STATE EQUIPMENT FLEET

The State Equipment Fleet (SEF) is responsible for managing the Highway Equipment Working Capital Fund (HEWCF) that procures, maintains, and disposes of fleet assets for all Executive Branch Agencies. SEF Regional staff provide vehicle and equipment maintenance statewide for all state agencies.

SEF also provides support in the form of licensing and maintenance as requested for the University of Alaska and Alaska Housing Finance Corp.

- \$35M Capital Budget (FY2023) for replacement of fleet assets at the end of their useful life
- \$36.3M Operating Budget (FY2023) for maintenance and repair of fleet assets
- 158 staff providing services statewide
 - 126 technicians and 5 managers supporting 79 maintenance stations and 235 rural airports
 - 15 parts staff at 7 hubs managing \$8M in annual purchases and inventory
 - 12 administrative and support staff
 - During FY2022 SEF staff recorded over 5,700 hours supporting DNR Forestry, DOT&PF Maintenance & Operations snow and ice control, and Aircraft Rescue & Fire Fighting (ARFF) duties
- 51 equipment maintenance shops statewide providing support for DOT&PF, the rural airport system and all executive branch agencies
- 7,366 assets for the Executive Branch Agencies; 847 licensed assets from the University system and Alaska Housing Finance Corporation, and Alaska Energy Authority



Alaska DOT&PF snowplow.



Tazlina District, Ernestine crew painting Valdez Airport. Photo by Chance Box, Alaska DOT&PF

WHAT'S NEW in SEF?

- SEF scrambling to keep new equipment rolling in and keep what we have on the road
- Venture into fully electric vehicles (pilot purchase of a pickup) is stalled, as is everything to do with vehicles and equipment worldwide
- Dealing with the challenges of labor shortage, supply chain issues, manufacturing delays

- Vehicle and equipment rental pools allow sharing of centrally located specialized equipment and services in locations where other rental options are not available.
- Fuel Card program for fuel at private refueling stations. Roughly 3,400 active cards are administered and \$5.5M in fuel costs in FY22 were billed through the SEF system.

TRANSIT

- DOT&PF awarded \$9,522,662 in apportioned and discretionary FTA funds to rural Alaska communities; \$7,901,969 in FTA CRRSAA funds; and \$1,135,623 in AMHT funds.
- In addition to providing operating assistance, funds enabled the purchase of 8 transit vehicles for rural communities.
- 1,267,558 rides were provided.
- DOT&PF completed the report [The Economic Value of Public Transit in Alaska](#), indicating the positive value of transit investment in the state in jobs created/sustained and economic activity generated.
- DOT&PF hosted the annual transit operators meeting in February 2022.

MEASUREMENT STANDARDS AND COMMERCIAL VEHICLE COMPLIANCE

Measurement Standards is responsible for the annual inspection of weighing and measuring devices that are used in any form of commerce and trade. In State Fiscal Year (SFY) 2022:

- 14,469 device inspections were conducted statewide
- 9.4% of the inspected devices were rejected or issued a repair notice
- Testing and registration of 1,166 scales used in the regulation of the commercial marijuana industry
- 2,454 calibrations were performed by the State Metrology Laboratory

Commercial Vehicle Compliance (CVC) is responsible for the State's vehicle size and weight program and the commercial motor vehicle/driver safety inspection program. These enforcement activities serve to reduce crashes, injuries and fatalities by removing unsafe drivers and vehicles from the road. In Federal Fiscal Year (FFY) 2022:

- 8,626 safety inspections conducted
- 944 unsafe vehicles and 161 unsafe drivers removed from the road
- 8,329 safety violations documented: 6,610 vehicles, 1,545 drivers, and 174 hazardous materials
- 83,150 vehicles weighed at weigh stations and 158 vehicles at mobile roadside checks
- Weight compliance for vehicles that passed over weigh stations and portable scales was 98.1%
 - 752 unpermitted overweight vehicles, of which 232 received a written citation
- New Entrant Safety Assurance Inspector conducted 22 audits on Interstate motor carriers

Performance Measures – Commercial Vehicle Compliance

- Reduce the number of Federally-reportable Commercial Motor Vehicle (CMV) related crashes below a five Federal Fiscal Year (FFY) 2014-2018 average of 73
 - In FFY2021 – 16 Federally-reportable CMV-related crashes (preliminary data)
 - In FFY2021 – 10 Federally-reportable CMV-related crashes (preliminary data)
- Reduce the fatality rate below 0.114 fatalities per 100M total vehicle miles traveled
 - In CY2021 – 0.087 fatalities per 100M total vehicle miles traveled (preliminary data)



Commercial Vehicle Compliance Inspector Rendulic contacts a driver during the Division's annual Seatbelt Safety Outreach event.
By Alex Surnin, Alaska DOT&PF



Weights and Measures Inspector Burns teaching the different components of a prover to Inspector Nighswander and Murphy. By Cynthia Antigua, Alaska DOT&PF

For more information contact:
Andy Mills, Legislative Liaison
(907) 465-8124
dot.leg@alaska.gov



Alaska Department of Transportation & Public Facilities
PO Box 112500
3132 Channel Drive
Juneau, Alaska 99811

Find us online at dot.alaska.gov
and on social media:

